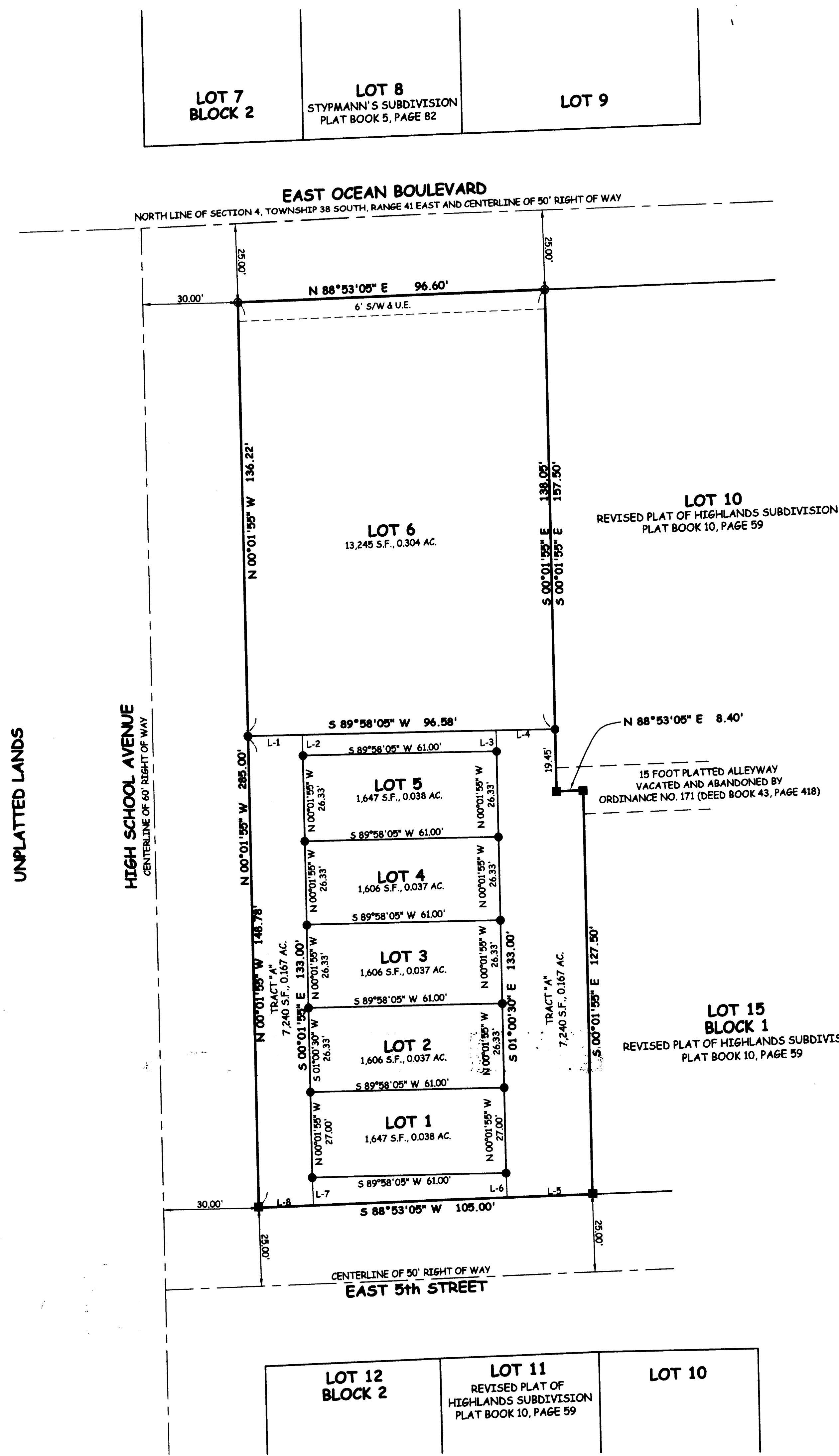
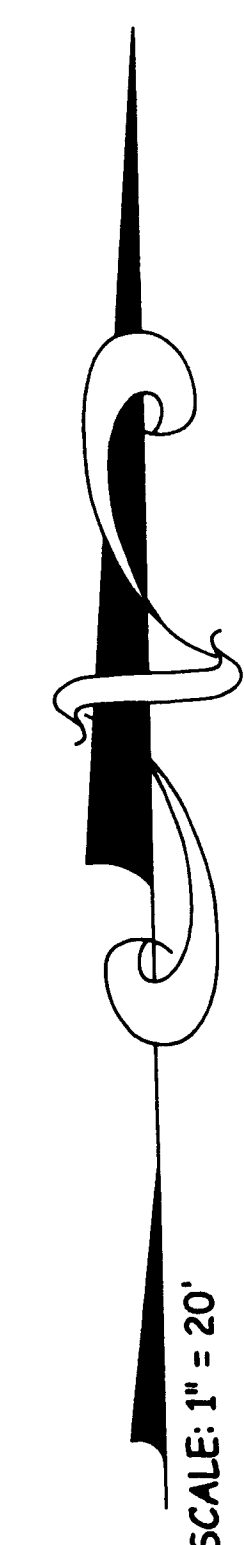


PINEAPPLE PLACE

BEING A REPLAT OF A PORTION OF THE REVISED PLAT OF HIGHLANDS SUBDIVISION AS RECORDED IN PLAT BOOK 10, PAGE 59, PALM BEACH (NOW MARTIN) COUNTY PUBLIC RECORDS AND LYING IN A PORTION OF SECTION 4, TOWNSHIP 37 SOUTH, RANGE 41 EAST, CITY OF STUART, MARTIN COUNTY, FLORIDA.



LINE TABLE		
LINE	LENGTH	BEARING
L-1	17.00'	N 89°58'05" E
L-2	6.53'	S 00°01'55" E
L-3	6.53'	S 00°01'55" E
L-4	18.58'	S 89°58'05" W
L-5	26.84'	S 88°53'05" W
L-6	7.78'	N 01°06'55" W
L-7	8.93'	N 01°06'55" W
L-8	17.17'	N 88°53'05" E



SCALE: 1" = 20'

- LEGEND**
- AC = ACRES
 - L-1 = LINE 1
 - LB = LICENSE BUSINESS
 - ORB = OFFICIAL RECORD BOOK
 - PG = PAGE
 - PRM = PERMANENT REFERENCE MONUMENT
 - R/W = RIGHT OF WAY
 - S.F. = SQUARE FEET
 - S/W = SIDEWALK
 - U.E. = UTILITY EASEMENT
 - = SET 5/8" IRON ROD/CAP "VELCON LB 4942"
 - = SET 4"x4" CONCRETE MONUMENT "PRM LB 4942"
 - ⊙ = SET PERMANENT CONTROL POINT STAMPED "PRM LB 4942"

PLAT PREPARED BY:

VELCON GROUP, INC.
ENGINEERS & SURVEYORS
CERTIFICATE OF AUTHORIZATION NO. LB 4942
702 S.W. PORT ST. LUCIE BLVD.
PORT ST. LUCIE, FLORIDA 34953
PHONE (772) 879-0477, FAX (772) 871-6659
Web Site: www.velcongroup.com

F:\Projects\15-108115-10015-100 PLAT.dwg, PLAT SHEET 2, 6/27/2018 8:29:33 AM, Velcon Group, Inc., (772) 879-0477